

# WRIGHT SWCD NEWS

WINTER NEWSLETTER OF WRIGHT SOIL & WATER CONSERVATION DISTRICT



## TABLE OF CONTENTS

- Wetland Conservation Act.....2
- One Watershed, One Plan.....3
- Aquatic Invasive Species & MN Ag Water Quality Certification Program.....4
- Smart Salting Tips & Winter Manure Application.....5
- SWCD Supervisors.....6
- SWCD Staff & Environment Educational Days.....7
- 2022 Photo Contest.....8
- Tree Orders Now Available for Spring Pickup.....9-13



## RAYMONDS SELECTED AS 2021 OUTSTANDING CONSERVATIONIST

The Raymond family has been farming along the North Fork of the Crow River (north of Howard Lake) since 1977. Jim and Mary are 1st generation dairy farmers, milking 70 cows until 1992.

They currently own 200 acres and farm about 300 acres on which they raise corn, soybeans and alfalfa. In addition, Jim has served on the Middleville Township Board for the past 18 years.

In 2019, the Raymonds utilized Clean Water and EQIP funds to repair a large gully which delivered sediment directly to the river. What makes that project and other projects Jim was involved in a success is his ability to get neighboring landowners to discuss conservation.

The Wright Soil and Water Conservation District would like to congratulate the Raymonds for their continued efforts towards farming with the environment in mind.



Raymonds have completed numerous conservation practices such as a wetland restoration, water and control sediment basins, and a grade stabilization structure.



Type 4 - Wetland during dry conditions.



Type 4 - Wetland during normal conditions.

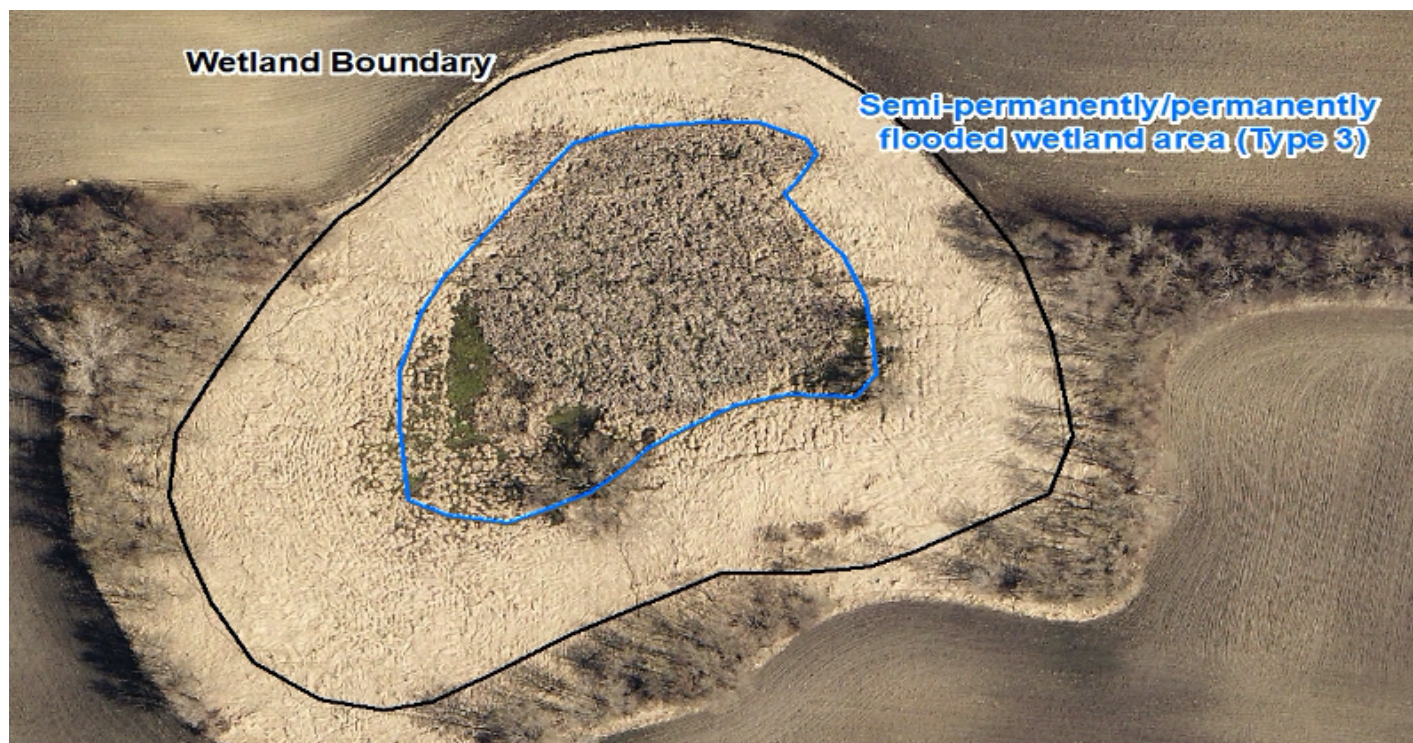
## WETLAND CONSERVATION ACT

Landowners frequently inquire about excavating ponds on their property. More often than not, the preferred location of these ponds is located within a natural wetland area due to the presence of a high water table or standing water. This summer's drought made accessing these areas feasible and there has been an increase in landowner interest and excavation activity within wetlands.

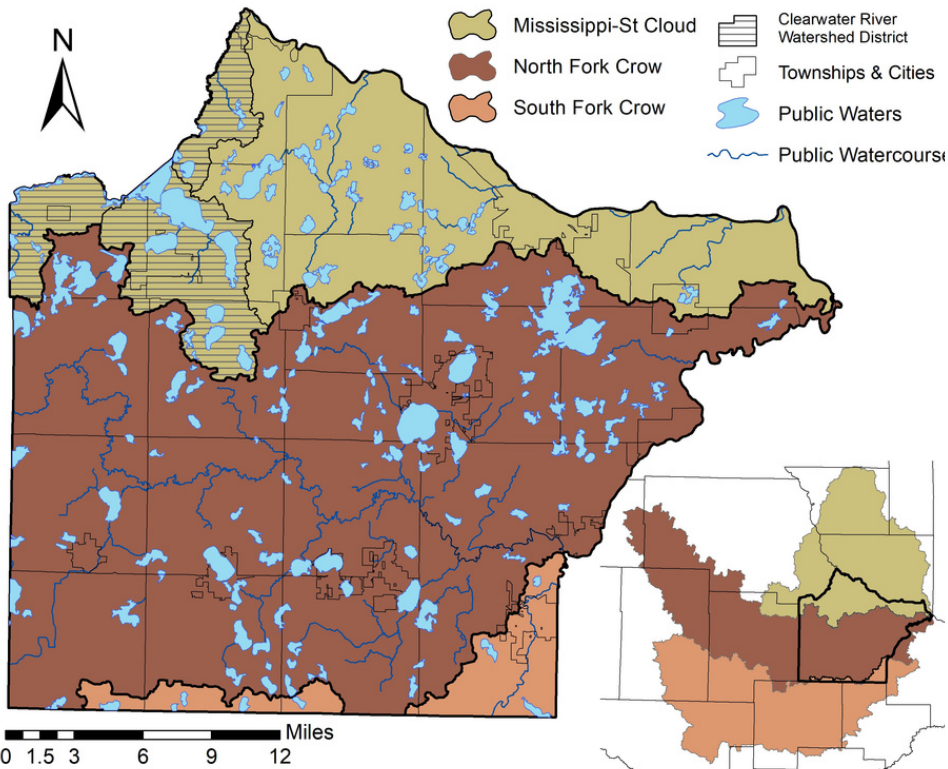
The Minnesota Wetland Conservation Act (WCA) regulates excavation in the permanently and semi-permanently flooded portions of Type 3, 4, and 5 wetlands or if the excavation results in converting any type of wetland to non-wetland.

In general, Type 3, 4, and 5 wetlands have water that persists throughout the growing season in most years. In order to excavate in these types of wetlands, the project must meet certain criteria to establish that the excavation will result in an overall improvement to wildlife habitat. Many people assume that creating a deeper wetland with standing water is a good thing for wildlife, but this is not necessarily the case.

Prior to conducting any work in a wetland, landowners should contact the Wright SWCD to verify that their proposed project meets WCA rules. Wright SWCD staff will evaluate projects to determine the wetland type and if additional documentation is needed prior to conducting the work.



# ONE WATERSHED, ONE PLAN



Wright County has three major watersheds - Mississippi - St. Cloud in the north, the North Fork Crow River in the center, and the South Fork Crow River in the southeast.

The One Watershed One Plan (1W1P) is a program administrated by the Minnesota Board of Water and Soil Resources (BWSR) that coordinates the transition from county-based water management planning to watershed-based planning.

The goal of the 1W1P is to align local water planning on major watershed boundaries with state strategies boundaries with state strategies towards prioritized targeted measurable implementation plans.

The plan brings counties, soil and water conservation districts (SWCD), watershed districts, tribes and other local government units together to improve the waters of the state in a collaborative manner.

Wright County has three major watersheds, Mississippi-St. Cloud in the north, the North Fork Crow River in the center and the South Fork Crow River in the southeast.

So far only the North Fork Crow River has completed the 1W1P process. It brings \$1.2 million to the North Fork Crow watershed every two years to implement best management practices.

In 2021 both the Mississippi-Saint Cloud and South Fork Crow River will enter the planning phase of 1W1P. Citizens will be invited to public meetings throughout the two-year planning process.

Contact [Alicia.ohare@usda.gov](mailto:Alicia.ohare@usda.gov) or [wrightswcd.org](http://wrightswcd.org) for more information.



## MINNESOTA AG WATER QUALITY CERTIFICATION PROGRAM

The Minnesota Agricultural Water Quality Certification Program (MAWQCP) is a voluntary opportunity for farmers and agricultural landowners to take the lead in implementing conservation practices that protect our water. Those who implement and maintain approved farm management practices will be certified and in turn obtain regulatory certainty for a period of ten years.

Through this program, certified producers receive:

- Regulatory certainty: certified producers are deemed to be in compliance with any new water quality rules or laws during the period of certification
- Recognition: certified producers may use their status to promote their business as protective of water quality
- Priority for technical assistance: producers seeking certification can obtain specially designated technical and financial assistance to implement practices that promote water quality

Through this program, the public receives:

- Assurance that certified producers are using conservation practices to protect Minnesota's lakes, rivers and streams

### How to sign up:

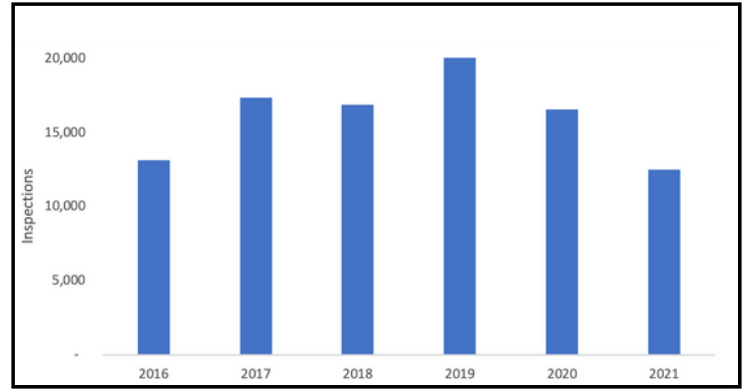
If you are interested in becoming water quality certified, contact the Wright SWCD office at 763-682-1970.

*\*Information provided by the Minnesota Department of Agriculture*

# AQUATIC INVASIVE SPECIES (AIS)

The aquatic invasive species (AIS) inspection program had a slow year. Staffing shortages and low water levels brought down the number of hours and the overall inspection count. Even so, SWCD inspectors conducted more than 12,000 inspections at 26 public accesses.

These inspections were funded by the Local AIS Aid Fund and several lake associations. Local AIS Aid Fund was also used to support the inspections by other agencies on Clearwater Lake and Lake Pulaski.

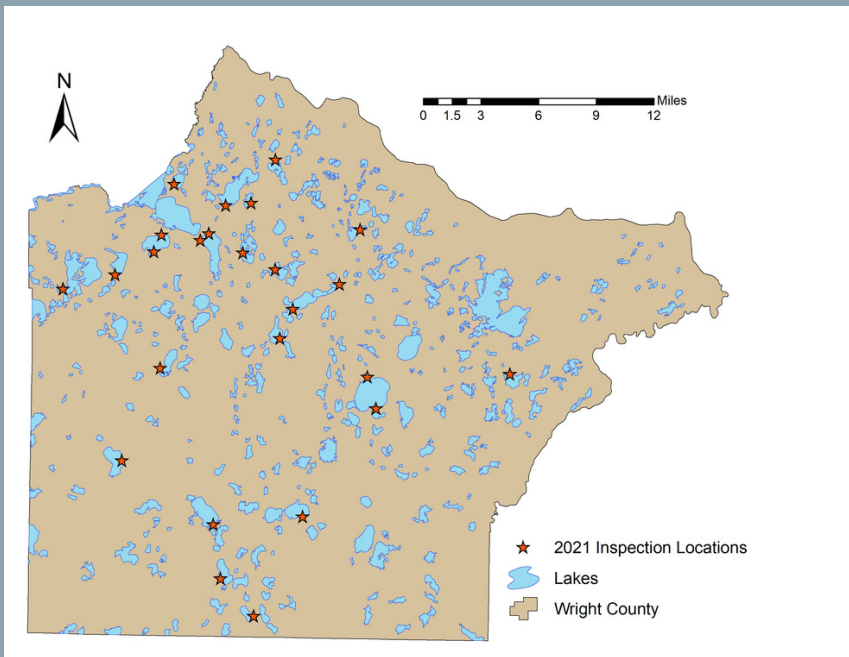


SWCD inspectors conducted more than 12,000 inspections at 26 public accesses this year.



The county is working with two lake associations to put in waterless cleaning stations at the accesses. These will provide tools for lake users to clean their equipment and drain water. The placement of these stations is currently under review by federal and state agencies.

The AIS treatment program helped pay for the survey, harvest and chemical treatment of three species of AIS to 24 lake associations. A pilot program placed bait compost bins at 12 public accesses for boaters to dispose of unused bait. A new infestation of zebra mussels was found on Locke Lake.



## AIS HIGHLIGHTS

- 24 lake associations received treatment grants
- 12,716 AIS inspections
- 12 pilot program bait compost stations established
- 6,445 interactions with the public through inspections

# SMART SALTING TIPS FOR WINTER

Did you know that it only takes 1 teaspoon of salt to pollute 5 gallons of water? The equivalent of a 50-pound bag of salt can pollute 10,000 gallons of water. According to the Minnesota Pollution Control Agency (MPCA), recommends using less than 1 pound of salt per 12 ft. x 12 ft. area.

We all rely on the use of salt to keep our roads, sidewalks, and parking lots safe. However, too much salt can pollute our local drinking water supply, groundwater supply, the fish habitat, and the lakes we swim and fish in.

Salt becomes invisible shortly after it is applied because it dissolves, becoming difficult and costly to remove once in our water resources. Prevention is the best way to protect and preserve clean water. Think before you salt and use these tips for salting to keep your guests, grounds, and facility safe this winter.

The Minnesota Pollution Control Agency is offering Smart Salting trainings on proper salt usage for property managers, snow plow drivers, and any one who maintains public sidewalks, walkways, and parking lots. For more information on classes, visit

<https://www.pca.state.mn.us/water/smart-salting-training>



## Tips to reduce the need of salt:

- 1.) **Shovel/snow blowing** - Consider shoveling or snow blowing the snow before applying the recommended amount of salt.
- 2.) **Sweep up & reuse excess salt** - If the salt is swept up, it will reduce the amount that runs off into the storm drains which is carried into lakes, streams, wetlands, and groundwater.
- 3.) **Educate** - Do research on how to utilize salt, how it affects you and your neighbor, and the recommended amount to be applied.
- 4.) **Pay attention to temperature** - Salt stops working at 15 Fahrenheit. Consider shoveling/snow blowing or applying sand to help with traction.
- 5.) **Slow Down** - Ensure you give snowplow drivers plenty of space to complete their work in order to make our roads safe.

To learn more on how you can help reduce salt use, visit the Minnesota Pollution Control Agency website: <https://www.pca.state.mn.us/news/10-smart-salting-tips-protect-minnesota-waters>.



# WINTER MANURE APPLICATION

During the winter, many producers may be faced with the challenge of getting rid of their manure to avoid overflow spillage or not having enough storage through the winter months.

According to the University of Minnesota - Extension, it is not recommended to apply manure to frozen or solid ground. This is due to the concern over runoff risks in the spring time when the snow and ice melt, the excess nutrients from the manure may end up in nearby bodies of water and our local drinking water supply.

The Minnesota Department of Agriculture has developed a Minnesota Runoff Risk Advisory Forecast (RRAF) system to help farmers and commercial applicators determine the best time to apply manure. Things like snow melt, precipitation, and other weather conditions can cause manure to runoff.

To learn more about the tool, visit <https://mnag.maps.arcgis.com/apps/MapSeries/index.html?appid=7a6538ffc8994715ba668f0579fe53a2>



*Melissa Wilson, Associate Professor/Extension Specialist for the University of Minnesota explains the Minnesota Runoff Risk Advisory Forecast (RRAF) System. To view the video on YouTube, click here: [https://www.youtube.com/watch?v=4Sp\\_Afjp3VE&t=3s](https://www.youtube.com/watch?v=4Sp_Afjp3VE&t=3s).*

# SWCD SUPERVISORS

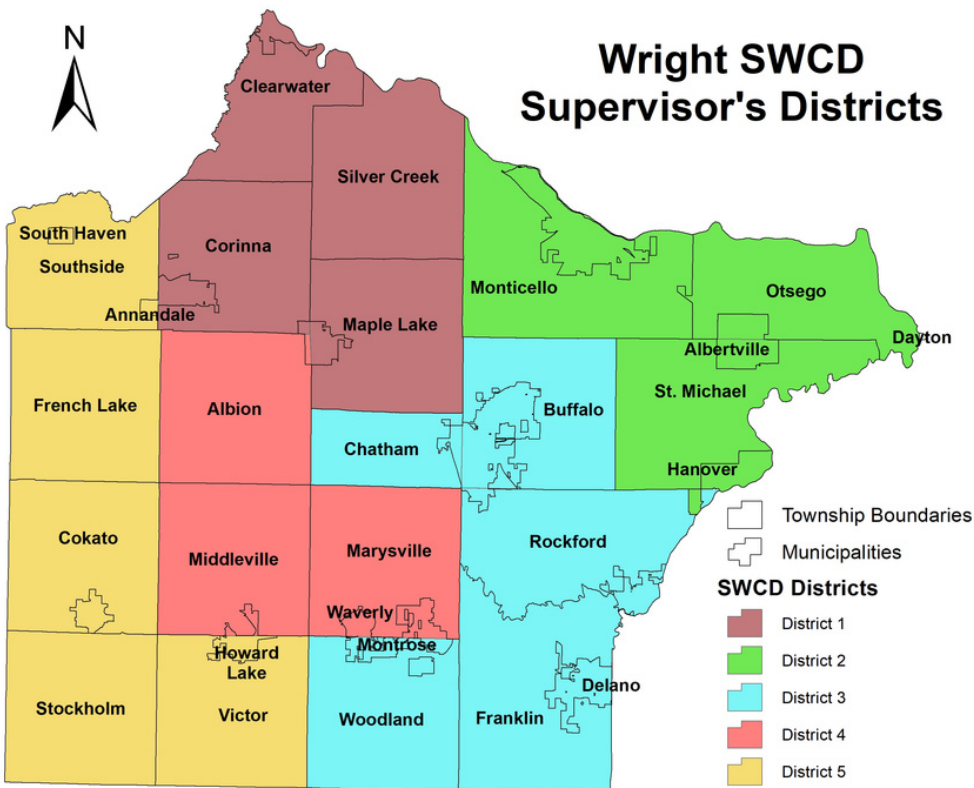
The Wright SWCD's Board is comprised of five Supervisors who are elected by nomination districts on the county wide general election.

Supervisor terms are staggered every four years.

Supervisors receive a per diem of \$75 per board meeting and meet once a month to set goals, policies, and priorities for the District.



Back Row (left to right): Duane Dahlman – Vice Chair, Bill Daluge – Supervisor, Mike Zieska – Supervisor. Front Row (left to right): Jeff Burns – Secretary/Treasurer, Chris Uecker – Chair.



## District 1

Mike Zieska

Clearwater, Silver Creek, Maple Lake, Corinna

## District 2

Jeff Burns

Monticello, Otsego, Dayton, Albertville, St. Michael, Hanover

## District 3

Bill Daluge

Buffalo, Chatham, Rockford, Delano, Franklin, Montrose, Woodland

## District 4

Chris Uecker

Albion, Middleville, Marysville, Waverly

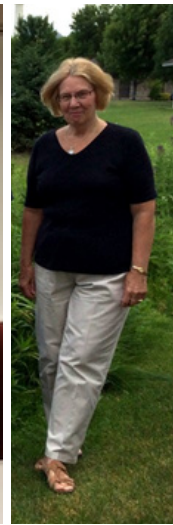
## District 5

Duane Dahlman

Southside, South Haven, Annandale, French Lake, Cokato, Howard Lake, Stockholm, Victor



Wright SWCD Staff Members (left to right): Front row: Andrew Grean, Pam Kuhn, and Alicia O'Hare. Back row: Luke Johnson, Mike Candler, Dan Nadeau, Eric Mattson, Kerry Saxton (retired), and Sandra Hessedal.



## ENVIRONMENTAL EDUCATION DAYS

Each spring and fall the Wright SWCD and Wright County Parks, partner to host the 5th Grade Environmental Education Days held at Ney Park north of Maple Lake. Environmental Education Days provides students the knowledge, skills, and the importance of caring for the environment in which they live in.

In the fall of 2021, over 760 students visited different teaching stations where they learned about blue birds, dogs, earthworms, furs, honeybees, mammal skulls and bones, mosquitoes and ticks (pictured below), mushrooms, pollinators, soils, tallgrass prairies, trees, trumpeter swans and water quality.

We enjoy having our volunteer speakers and greatly appreciate their time used to educate the students. Without these dedicated volunteers, we would be unable to offer this great learning opportunity.



Volunteers from Metropolitan Mosquito Control District visits with students on mosquito and ticks.

## SWCD STAFF

Wright SWCD staff work with private landowners throughout the county on various soil and water projects to enhance and protect our natural resources.

### Soil & Water Staff Directory:

- Luke Johnson** | District Manager
- Pam Kuhn** | Administrative Assistant
- Mike Candler** | Natural Resources Engineer
- Eric Mattson** | Conservation Technician
- Sandra Hessedal** | Office Assistant
- Andrew Grean** | Senior Wetland Resource Conservationist
- Dan Nadeau** | Senior Resource Conservationist
- Alicia O'Hare** | Water Management Specialist



# 2022 PHOTO CONTEST

Submit a photo(s) in one of the four contest categories (Landscape & Wildlife, Active Recreation, Humorous or Unusual Observation, and Conservation Efforts) by December 1, 2022.

Select photo entries will be posted in the Wright SWCD's Facebook page. Photo must be taken between January 1, 2022 and December 1, 2022.

All photos entered in the contest must be taken within Wright County. No photo shopped pictures will be accepted.

One first and second place winner be chosen in each of the four categories. First place winners will receive a prize of \$100 and second place will receive \$50. Multiple entries are accepted.

See [Entry Form](#) for more details, categories, and contest rules.

## Category 1: Landscape & Wildlife

Photo entries should represent the natural environment that can be found on one of our many landscapes in Wright County such as prairie, forest, lakes, wetlands, etc.

## Category 2: Active Recreation

Photos entered in this category should showcase the active recreational opportunities offered by the lakes and streams in Wright County. Activities may include, but are not limited to; canoeing, kayaking, boating, swimming, tubing, hiking, wading, fishing, and hunting.

## Category 3: Humorous or Unusual Observation

This category allows you to use your imagination. Entries can include unusual wildlife, recreation, catches, or just an unusual photo.

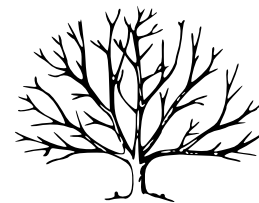
## Category 4: Conservation Efforts

Depictions of conservation practices at work on the landscape such as tree plantings, native vegetation, clean-up efforts, water sampling, cropland conservation.





# NOW ACCEPTING TREE ORDERS FOR SPRING PICKUP



We are now accepting tree orders for 2022. See [information](#) and order form below.

- **Tree Order Form**

- The [Order Form PDF](#) is a fillable format and should calculate totals.
- The Willow – Native Shrub Mix is unavailable from the nursery. We have substituted it with Bebb's Willow.
- To place an order: Save the order form to your PC, open, fill-out and return as an attachment to an email or print and mail to our office.
- Orders can be filled out and returned electronically to [eric.mattson@usda.gov](mailto:eric.mattson@usda.gov) or sent to Wright SWCD by mail. All orders are filled on a first come, first served basis to Wright County residents and non-residents.

- **2022 Native Prairie Seed Mixes and Plant Kits**

- **Native Prairie Seed Mixes:** Composition lists are available on our website on the tree program page. Mixes will cover approximately 500 sq. ft. but, can be used to enhance areas that lack diversity if sufficient preparations are done.
- Upland Mesic Seed Mix contains 36 native prairie species, including 10 grasses and 26 forbs. This mix is designed for full sun with medium soil moisture or clayey soils and contains species 3-6 feet tall.
- Short Dry Native Seed Mix contains 38 native prairie species, including 7 grasses, 2 sedges, and 27 forbs. This mix is designed for sunny dry areas or sandy soils. Where short species (2-4 ft) are desired.
- Native Plant Kits contain 36 plants consisting of 6 species in six 6-packs. They are great as enhancements to existing or new restoration areas, butterfly gardens, rain gardens, borders, and natural areas. Kits can be used with a native seed mix to increase diversity and bloom time in a planting. Although many species are adaptable, keep in mind each species has a preferred habitat. Two separate kits are available this year.

- **Tree Planting Bars:** Several planting bars are available for hand planting. These bars are available first come, first served.

- **Tree Planter Rental:** The tree planter is not recommended if planting less than 300 trees. This machine makes light work out of a backbreaking job. The tree planter has its own hydraulic system to raise and lower the trencher. The tree planter can plant up to 5,000 trees per day.

- **Cost:** \$50 (plus tax) per 1/2 day - \$100 (plus tax) per whole day

- **Tree Pro Tree Tubes** -- how to install: <https://www.treepro.com/ease-of-intallation/>

- [Emerald Ash Borer Discovered in Wright County](#)

## Related Information:

- [Tree Tube Order Form](#)
- [Prairie Seed and Plant Kits](#)
- [Mesic Prairie Seed Mix Composition](#)
- [SHORT/Dry Prairie Seed Mix Composition](#)
- [Species Description Guide](#)
- [Species Information Book](#)
- [Tree Spacing Guide](#)
- [Tree Care Guide](#)
- [Tree Owners Manual – USFS](#)
- [Tree Planting and Care – MNDNR](#)
- [Tree Planter Guide](#)
- [Seeding Natives](#)
- [Prairie Planting - What to Expect](#)



Over 36,250 trees were sold in 2020.



Staff working on fulfilling orders for pick-up.



# Wright Soil & Water Conservation District

Wright SWCD  
311 Brighton Avenue S., Suite C  
Buffalo, MN, 55313

Tel. (763) 682-1933 Ext. 3  
(763) 682-1970  
Fax. (763) 682-0262  
[www.wrightswcd.org](http://www.wrightswcd.org)

1-31-2022

## 2022 TREE PROGRAM

### Tree Program Participant,

Last year was another test for us. COVID has certainly changed how we do things and encouraged new ideas. It was obvious that many people spent more time outside on their property thinking about planting since we had a lot of interest in our program. There was high demand for nursery stock industry wide. Unfortunately, there is only so much supply. Little did we know that 2021 would turn out to be a record drought year, certainly not great for newly planted trees. If you did plant trees last season, I hope that they were able to get some moisture either by a lucky rain cloud or supplemented watering. I'm not sure how many times I watered throughout the summer and fall but it seemed like a never-ending weekend project. With levels of loss likely higher last year, it can be discouraging, but we should use it as a learning experience. We can increase the resiliency of newly planted stock by following good planting techniques and watering, mulching, and weeding around each plant. Hardwood mulch placed in a 1–2 ft diameter around a tree can drastically reduce moisture loss. Remember to keep the mulch away from the trunk a few inches to prevent disease.

Again this season, demand has remained high, and stock supply is likely short given the added demand from last season and the drought. I reserved most of our inventory in October 2021 and was able to secure a decent supply for spring 2022, however, certain species were just not available. Tamarack and Hazelnut have again proven to be in short supply. I encourage you to diversify your planting plans and give your landscape a little variety. Of course, it is important that the species that you select are appropriate for your planting sites.

Tree protection can be an important part of your planting plan. Newly planted deciduous trees and shrubs can be quickly destroyed by browsing mammals like deer and rabbits. Although we love wildlife and may even plant for their benefit, they tend to devour newly planted trees, especially early spring as things are still greening up and new shoots are tender. Winter and early spring tend to be when most browsing occurs. For deciduous trees, tree tubes work great for protection and enhancing growth. For shrubs and evergreens, Small wire cages, 1-2 ft in diameter and 4-5 ft tall will certainly help reduce herbivory damage. There also are repellent products that can be applied to deter critters, but likely need multiple applications in a season.

The **Native Plant Kits** have been a great addition to our spring offerings. For those with limited space, small yards, or garden areas they work well. They also add diversity to the landscape for pollinators, wildlife, and aesthetics. Since our sale is early spring the plants that we receive are usually right out of the greenhouse or dormant from the previous year's stock. The quality of these plants has been great, but it is important to be aware of temperatures before planting outdoors. With a little necessary site prep, the **Native Seed Mixes** are another great option to "naturalize" your landscape. Small native prairie gardens can provide much needed food sources and refugia for birds, pollinators, and other wildlife. More info can be found on our webpage under the Tree Program: [wrightswcd.org/tree\\_program.html](http://wrightswcd.org/tree_program.html)

Winter is a great time to sit down and think about your ideas and priorities for your plantings. Do you want to provide pollinator and wildlife habitat, property borders, windbreaks, improve aesthetics? Or likely a combination of these things. We continue to provide a variety of MN native and adapted species that will hopefully suit your landscape. We like to switch it up every year to meet demand and provide different options for continuous planters. If there are species that you would like to see on the list next year, let me know.

Sincerely, Eric Mattson – District Conservation Technician "Tree Guy"

### NURSERY STOCK

- 27 tree species from three nurseries in Michigan and Minnesota are available. As well as a hardwood tree pack, two local prairie seed mixes and two options for native flowering plant kits.
- Evergreens vary in height and are 3-4 years old indicated by the 2-2 (2 years in seedbed, 2 years in transplant bed).

## ORDERING

- Orders are filled in the order they are received. **Order early** to reserve your desired trees.
- The website will be updated as we run out of certain species.
- No order confirmations will be sent. If your order cannot be filled, you will get a call.
- **DO NOT SEND PAYMENT!** Payment is due at pick-up. Checks inadvertently sent, will be held until pick-up.
- Trees come in bundles of 25 per species. Quantity should indicate the number of **bundles** you want.
- The **Hardwood Pack** includes **10** trees total; two each of five different species.
- Orders can be adjusted until two weeks before delivery. No adjustments at pick-up.
- **Prairie Seed Pack** and **Native Plant Kit** info is on our webpage.

## PICK-UP

- If weather permits, trees are scheduled to arrive mid-April.
- Pick-up information will be sent via USPS, a week prior to pick-up, with time and location information.
- The **TREE BARN**, is at the Wright County Public Works, Shed A (brown/white), 3500 Braddock Ave. NE, Buffalo, MN.
- Full payment is required at pick-up.
- No receipts will be issued unless requested prior to pick-up.
- Tree roots are dipped in absorbent gel to protect from drying before packaging. They keep well up to a week in the package, if kept cool and sprinkled with water every couple of days. **DO NOT STAND THEM IN WATER, THEY WILL ROT.**

## TREE PLANTER

The rental rate is \$100/day +tax or \$50/half day +tax. The Planter is **NOT** recommended for planting less than 300 trees.

## DONATIONS

We can donate up to 500 trees (100 per donation) to be planted on public land. This is a great project for a youth group, let us know if you have a project in mind.

## ALSO ENCLOSED

*Tree Order Form - Tree Tube Order Form - 2022 New Species - Native Prairie Seed and Plants - Species Description Guide*  
We have a **Species Information Book** and a **Spacing Guide** on our website.

**DO RESEARCH!** Successful tree planting depends on choosing the right species, proper planting, and continued care.

## TREE PRO GROW TUBES

Through cooperation with the manufacturer, we can have tubes and stakes shipped directly to your door. Tubes are great for protection from, deer, rabbits and voles and they act as a personal greenhouse for your trees. A 60" tube, comes with 3 zip-ties to secure them to stakes. Treated pine, wood stakes are also available and sold separately. You may prefer to purchase metal or fiberglass stakes or make their own from conduit or rebar. Bird nets, to prevent birds from falling in, are available to top tubes if requested on the order form. See installation video at: [treepro.com/ease-of-installation](http://treepro.com/ease-of-installation)

Tubes must be ordered and paid for **separately** from trees. To order, **mail** a completed order form and a check to the SWCD. Tubes and stakes will come directly to you after order and payment is received by the **SWCD**. Allow a few weeks for shipping and handling. The SWCD will **not** handle inventory of tubes or stakes.

## HISTORY

Year	Orders	Trees Sold
2021	425	54,000
2020	436	38,525
2019	360	31,250
2018	422	39,355
2017	388	37,410
2016	363	37,925
2015	293	27,325
2014	288	25,805
2013	202	18,300
2012	245	25,145

Year	Orders	Trees Sold
2011	276	30,700
2010	326	34,300
2009	344	38,950
2008	380	43,805
2007	400	46,550
2006	415	54,345
2005	431	55,665
2004	414	56,300
2003	415	52,754
2002	411	55,450



## Wright Soil & Water Conservation District

311 Brighton Ave S. Suite C Buffalo, MN 55313  
 763-682-1933 ext. 3 Email: eric.mattson@usda.gov

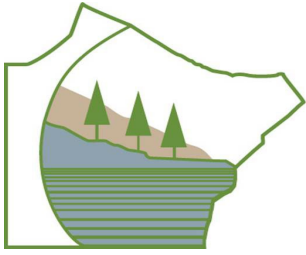
**Tree Tube Order**

Name	Home Phone
Shipping address	Cell Phone
City/state/zip	Email

Products sold in groups of 25				
Product	Size	Price/ 25	Quantity	Total
Miracle Tube (seemless tube)	60"	\$75.00		
Tree Pro Tube (slit tube)	60"	\$75.00		
Treated Pine Stake	60"	\$50.00		
bird nets free with tubes, check box to request <input type="checkbox"/>			<b>Total Cost</b>	

**Tax and shipping included**

For office use	Received: /	2022 Order #	Name
----------------	-------------	--------------	------



# Wright Soil & Water Conservation District

311 Brighton Ave S. Suite C  
 Buffalo, MN 55313  
 763-682-1970  
 Email: eric.mattson@usda.gov

## 2022 Tree Order



Name	Home Phone
Address	Cell Phone
City/state/zip	Email

### Bare Root Seedlings Sold in bundles of 25

	Species	Size	Quantity
Shrubs	Aroniaberry	18-24"	
	Buffaloberry, Silver	12-24"	
	Cranberry, Highbush	12-18"	
	Dogwood, Redosier	18-24"	
	Dogwood, Roundleaf	18-24"	
	Indigo, False	18-24"	
	Lilac, Common	12-18"	
	Rose, Meadow	18-24"	
	Willow, Bebb's	18-24"	
Small Deciduous	Apple, Domestic	12-18"	
	Ash, Mountain	18-24"	
	Beech, Blue	18-24"	
	Plum, American	18-24"	
	Serviceberry, Allegheny	18-24"	
Large Deciduous	Birch, Paper	18-24"	
	Cherry, Black	18-24"	
	Maple, Sugar	12-24"	
	Mulberry, Red	18-24"	
	Oak, Bur	12-18"	
	Oak, Red	12-18"	
	Poplar, Balsam	18-24"	
Conifers	Arborvitae, American	12-18" (2-3)	
	Fir, Balsam	8-14" (2-1)	
	Juniper, Rocky Mountain	8-15" (2-2)	
	Pine, Red	6-12" (3-0)	
	Pine, White	7-15" (2-2)	
	Spruce, White	9-15" (2-1)	
Variety Pack	<b>Hardwood 10 Pack</b> - 2 each of: bigtooth aspen, black cherry, bitternut hickory, pin oak, walnut		
Native Seed Mixes	Upland Mesic - clay soils	covers 500 sq ft	
	Short Dry - sandy soils	covers 500 sq ft	
<b>Total items</b>			
Native Plant Kits for Pollinators	6 species in six packs, 36 plants per kit		
	Shady Garden Kit		
	Sunny Garden Kit		
<b>Total kits</b>			

**All tree bundles priced at \$35.00**  
**Sales tax included**



Monarch on Butterfly milkweed  
 Photo credit: MN Native Landscapes

subtotal  
 @ \$35.00 ea

subtotal  
 @ \$65.00 ea

**Total Cost**

I understand that plant stock is not guaranteed and full payment is required at pick-up.

Signature **X**

For office use				
Received:	/	/ 2022	Order #	Name



**WRIGHT SOIL & WATER  
CONSERVATION DISTRICT**

311 BRIGHTON AVE SOUTH, SUITE C  
BUFFALO, MN 55313  
763-682-1970