



Wright Soil & Water Conservation District

311 Brighton Avenue S., Suite C
Buffalo, MN 55313

Tel. (763) 682-1933 Ext. 3
(763) 682-1970
Fax. (763) 682-0262
www.wrightswcd.org

2026 TREE ORDER PICK-UP

LOCATION

WRIGHT COUNTY PUBLIC WORKS – Shed A - 3500 Braddock Ave. NE, Buffalo, MN

The Tree Barn is at the Wright County Public Works Facility. The shed is brown with white stripes and a white roof (see map). Look for yellow Tree Sale signs. It is just north of the Wright County Public Works building.

NOTE –With the highway 25 **detour**, you will have to come from the west. take roundabout to 35th St NE (Cty Rd 83) east to the next roundabout, and head north on Braddock Ave for 0.1 miles. Use the right turn lane, take the right, and head up the hill to the Tree Barn. (See maps)

SCHEDULE

- District staff will sort and package orders by order number when trees arrive, before pick-up.
- Please pick-up your trees during one of the designated times listed on the next sheet. Staff are only at the tree barn during these times.
- If your order number is above 350 we may not have it packed yet by Wednesday afternoon.
- If you absolutely cannot make these times, contact Eric at the District to schedule an alternative pick-up.
- District staff work hard to provide trees in the best possible condition. Timely delivery depends on you.
- Plant your trees ASAP. After planting, we urge you to water, weed, and protect your trees from critters.
- **The District reserves the right to dispose of orders not picked up or without other arrangements made by May 1st. Refunds will not be given for orders not picked up.**

PAYMENT

- Payment was required when you placed your order online.
- A confirmation should have been emailed when you placed your order.
- We will be accepting credit cards, cash or check for remaining trees sales.

PROCEDURE

- Please come during a designated pick-up time. **Have your vehicle prepared for staff to load trees.**
- Use the included map as a guide for pick-up procedures.
 1. Follow signs/cones around the rear of the shed.
 2. **Continue around the side of the shed toward the front**, park in front of the garage door.
 3. Staff will check your information and load your trees.
 4. **Extra trees** are available Thursday – Saturday. Park and come in to see what trees are remaining.

PACKAGING

- Tree roots are dipped in absorbent gel to prevent from drying out. Trees are packed in wood shavings and labeled for pick-up. Once packed, they will not be watered.
- Tree packages may leak water in your vehicle so, bring a tarp.
- After pick-up, trees are your responsibility. Refer to the **Tree Care Guide** below. Proper care the first couple of years will certainly increase your tree survival rate.
- The trees keep fairly well up to a week, if kept cool, dark and sprinkled (not soaked) with water every couple days. **DO NOT STAND THEM IN WATER, THEY WILL ROT.** In warm weather, it doesn't take long before trees "heat" and die. **Keep trees cool, moist, and out of direct sun and wind.**

EXTRA TREES SALE

- Remaining trees will be for sale **Thursday, Friday and Saturday** (NOT Wednesday) during pick-up times. Please let your friends, relatives, neighbors, and co-workers know. They will remain the same price.
- There are approximately 5,900 unsold trees. They will be sold “first come, first served” until they are gone.
- If species you want are not available, let us know incase extras become available.
- Remaining inventory will be updated on our website and Facebook page.
- Ninebark, False indigo, balsam fir, ponderosa pine, and white pine currently have sufficient supply, with limited supply of many other species.
- We will take credit card, cash or checks for extra tree sales.

NOTES

- The District has (3) nursery providers, (1) in Minnesota, (2) in Michigan
- **Many species are sold out, including:** Lilac, Rose, Crabapple, Mtn maple, Pussy willow, Swamp oak, Pin oak, Arborvitae and Black hills spruce.
- We will fill the orders the best we can but if you ordered something with minimal inventory we may not be able to fill it. Refunds may be issued.
- Sorry, if you tried to order any of the trees we were out of. There’s always next year, order early to assure availability. Ordering information will be available in February 2027.
- The District had (7) planting bars, now we have (3). If you are lucky enough to **borrow** one, please return it to the District as soon as possible for others to use. Directions: sign it out, use it with care, clean it, **return it** to the SWCD office. We are missing a couple from last year, if you have one, please return it.
- **Tell everyone about the Extra Trees Sale.** We likely will have trees left on Monday, call 763-682-1970. The price is the same (unless you want a large quantity). Thanks for spreading the word!
- Do you have tree species you would like to see on the list next year? Let us know!

Eric Mattson

Wright SWCD Conservation Technician

Tree Care Guide

- Plant your trees ASAP. After planting: water, weed, and protect your trees from critters.
- Keep packaged trees away from direct sunlight, heat and wind. Keep the package cool (35-50°F), moist and dark. Sprinkle with water every few days if not planted immediately.
- Do not store more than 5 days. If planting will not occur within 5 days, remove the trees from package and “heel” them in a trench, covering the roots with soil. Keep the soil moist. A shady area is best.
- When planting, carry the trees in a pail with a few inches of water. Do not stand trees in water over 2 hours.
- Create a hole as deep and wide as the tree root system. Breakup soil clods. You need only go as deep as the roots since most roots will grow outward.
- If roots are too long or broken, cut them off. You do **NOT** want roots folded in the bottom of the hole.
- The root collar of the tree should be at ground level when planted. Spread out roots so they do not encircle and girdle the tree as it grows.
- If amending the soil, use at least half native soil so that roots are not discouraged from growing outward.
- Press the soil with your hands firmly around the roots to avoid air pockets. This can greatly affect survival.
- Put wood/bark mulch around trees to help hold moisture and reduce weeds. Keep mulch 3 inches away from the trunk to prevent disease.
- Water trees thoroughly after planting. Watering trees weekly in dry weather will help survival.

LOCATION

WRIGHT COUNTY PUBLIC WORKS - Shed A
3500 Braddock Ave. NE, Buffalo, MN

PICK-UP TIMES

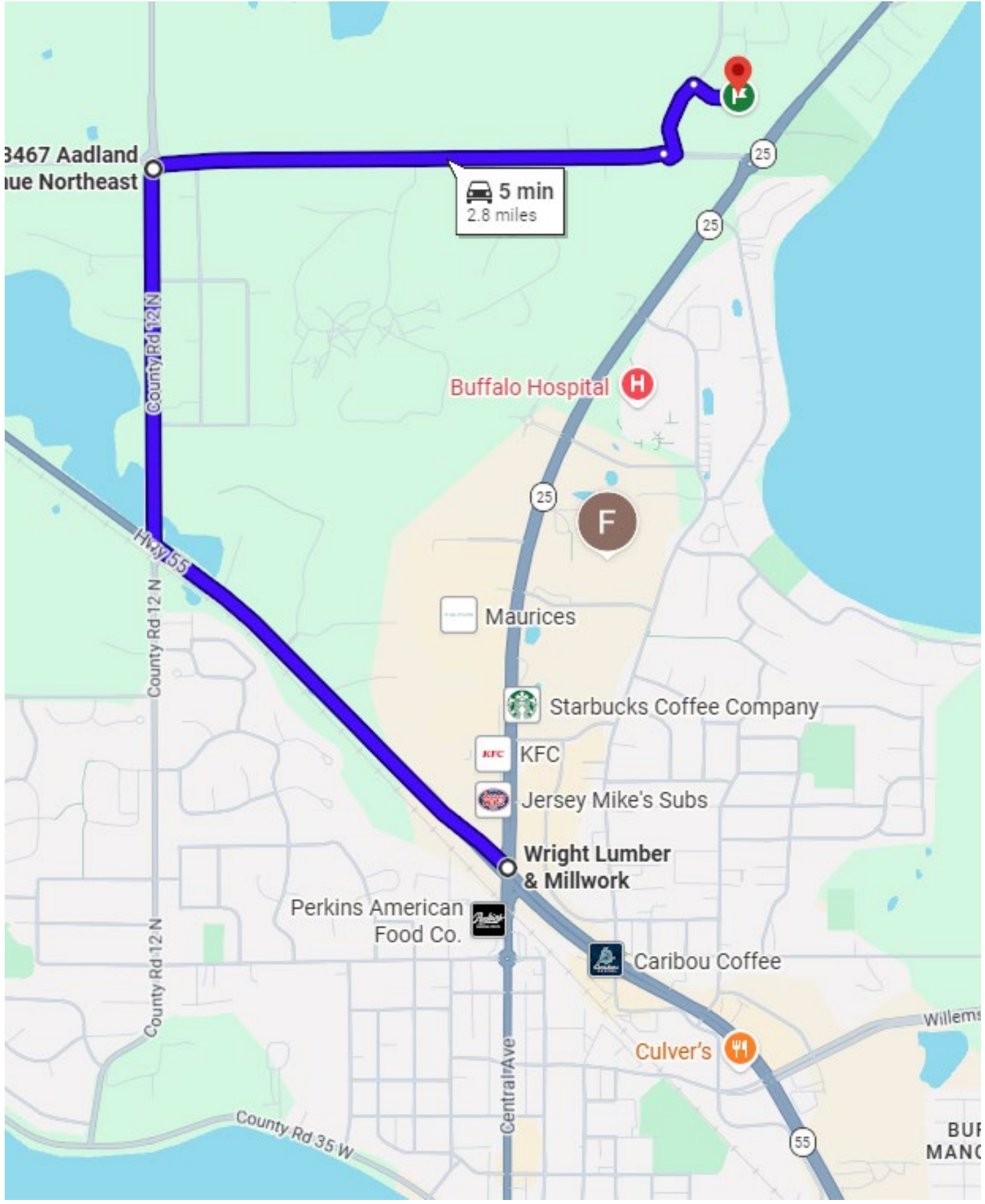
Pick the time best for you

Wednesday	April 22	3:00 PM - 7:00 PM
Thursday	April 23	3:00 PM - 7:00 PM
Friday	April 24	3:00 PM - 7:00 PM
Saturday	April 25	9:00 AM - NOON

Extra Tree Sales until gone! : at designated times or by appointment.

Tell you friends, relatives, neighbors, and co-workers

YOU are expected to pick-up your trees during one of these times. We may only be at the Tree Barn during delivery hours. If all times are **absolutely impossible**, call the office or email Eric (eric.mattson@mn.nacdnet.net) ASAP to arrange alternate pick-up. The District reserves the right to dispose of orders not picked up or without other arrangements made by May 1st. Refunds will not be given for orders not picked up.



3467 Aadland Avenue Northeast

5 min
2.8 miles

Buffalo Hospital

Maurices

Starbucks Coffee Company

KFC

Jersey Mike's Subs

Wright Lumber & Millwork

Perkins American Food Co.

Caribou Coffee

Culver's

County Rd 12 N

Hwy 55

County Rd 12 N

County Rd 12 N

County Rd 35 W

Central Ave

25

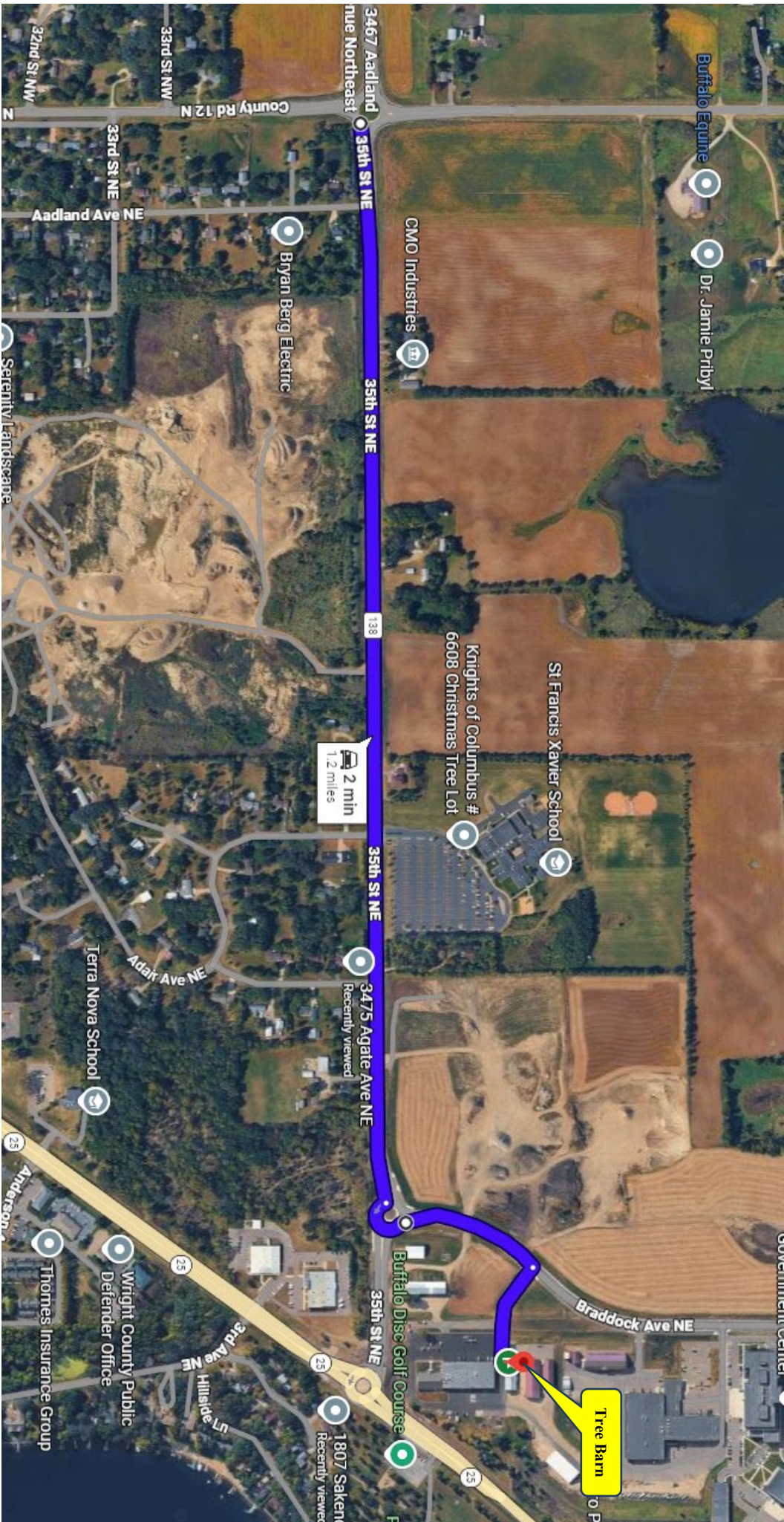
25

25

55

Willem's

BUF MANC



Buffalo Equine

Dr. Jamie Pribyl

CMO Industries

Bryan Berg Electric

Knights of Columbus #
6608 Christmas Tree Lot

St Francis Xavier School

3475 Agate Ave NE
Recently viewed

Terra Nova School

Tree Barn

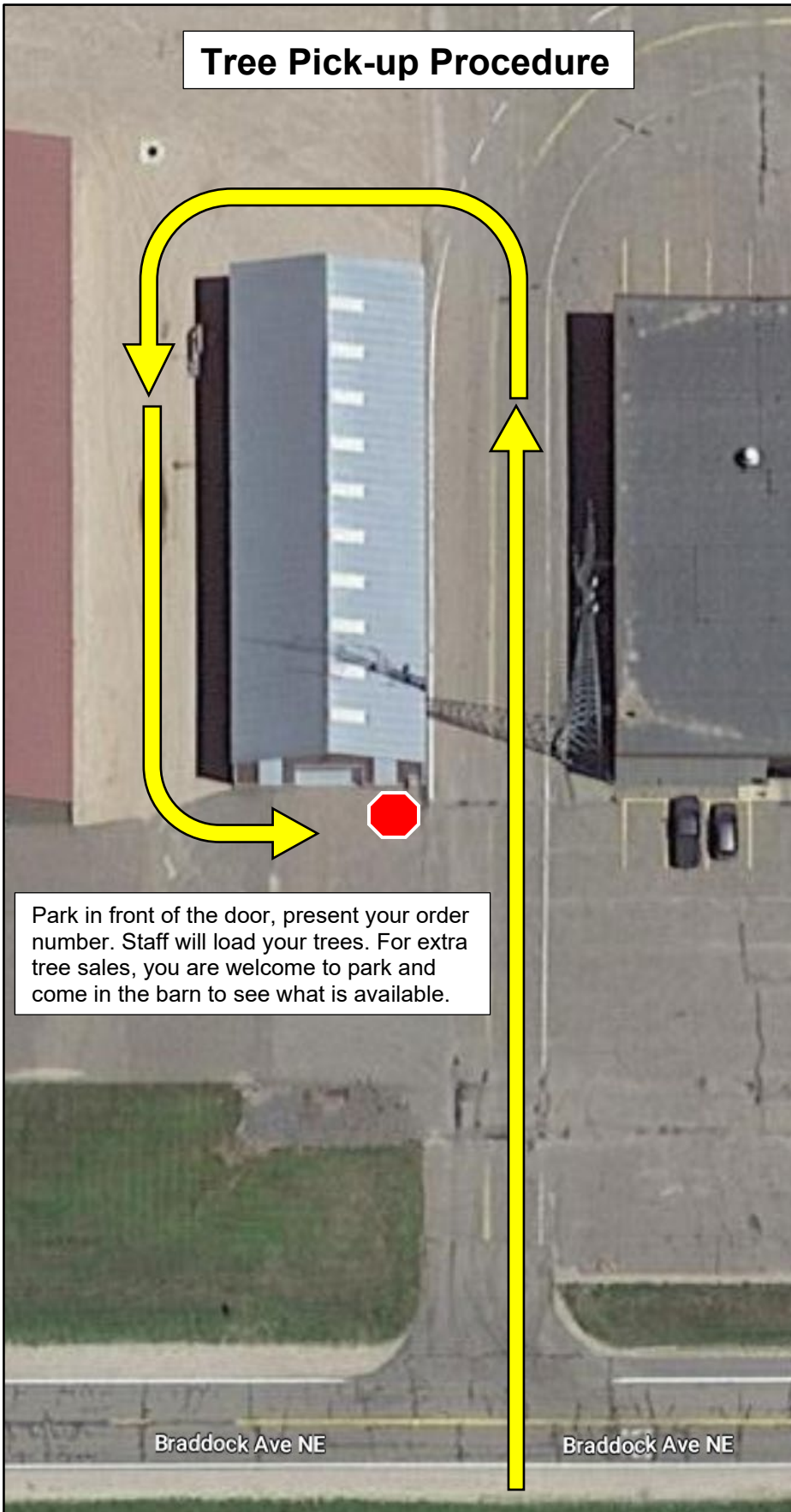
Buffalo Disc Golf Course

1807 Sakenda
Recently viewed

Wright County Public
Defender Office

Thomes Insurance Group

Tree Pick-up Procedure



Park in front of the door, present your order number. Staff will load your trees. For extra tree sales, you are welcome to park and come in the barn to see what is available.

Braddock Ave NE

Braddock Ave NE